

SUPPLYING HOMES IN MORELAND

WE NEED MORE AFFORDABLE HOMES

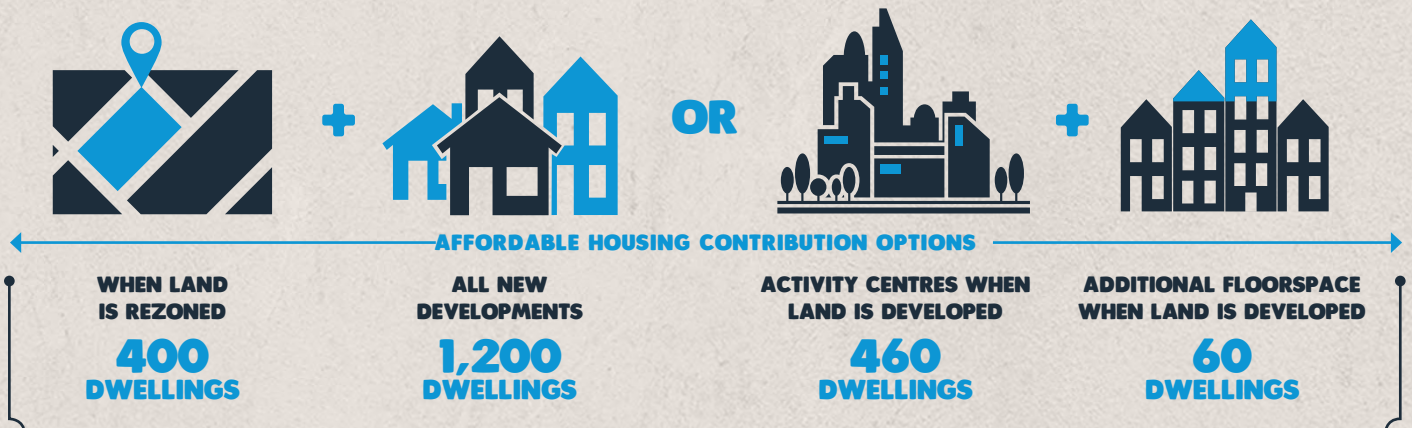


At least 4,000 households in Moreland are experiencing housing stress or homelessness. If nothing is done, this unmet need for affordable housing will increase by at least 3,000 households by 2036.

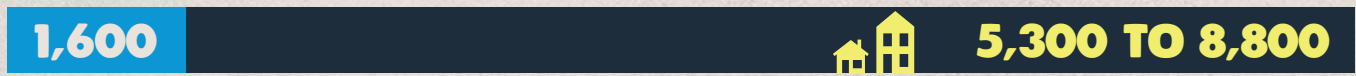


To meet this need, at least 18% of all new dwellings built over the next 20 years will need to be affordable housing.

WHAT CAN COUNCIL DO WITH GOVERNMENT APPROVAL?

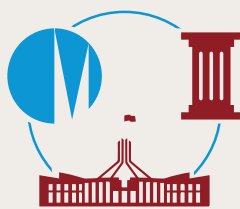


THIS CAN GENERATE UP TO 1,600 AFFORDABLE HOMES



THIS WILL REQUIRE A CONTRIBUTION FROM STATE AND FEDERAL GOVERNMENT OF UP TO 8,800 AFFORDABLE HOMES

WHAT CAN THE STATE AND FEDERAL GOVERNMENTS DO?



All levels of government need to work together to address this challenge

1,600 AFFORDABLE HOMES CAN BE ACHIEVED IF...



the State Government includes mandatory Affordable Housing mechanisms in the Victoria Planning Provisions

5,300 TO 8,800 DWELLINGS STILL NEEDED!



State and Federal governments can increase funding, use surplus land and introduce effective policies